

MOTORI PER ASPIRAPOLVERE - ASPIRALIQUIDI BY-PASS

MOTORS FOR VACUUM-CLEANERS AND BY-PASS LIQUID ASPIRATORS

CARATTERISTICHE TECNICHE:

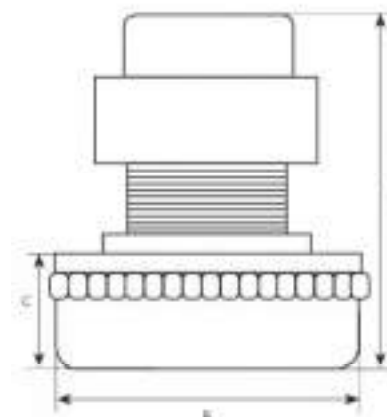
Esecuzione con due cuscinetti a sfere.
 Due impedenze antidisturbo radio.
 Classe d'isolamento B Grado II.
 Motore monofase 230V 50/60 Hz.
 Costruzione conforme alle norme CE.

TECHNICAL CHARACTERISTICS:

Execution with two ball bearings.
 Two radio antijamming impedances.
 Insulation class B Degree II.
 230V 50/60 Hz single-phase motor.
 CE norms.



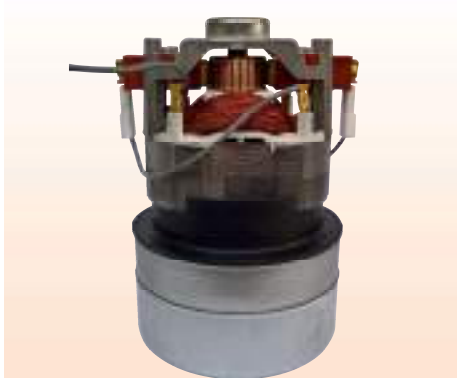
Articolo Art.	Potenza max W Max power W	A	Ø B	C	Stadi Stages
ASP. 500	1000	136	144	48	1



Articolo Art.	Potenza max W Max power W	A	Ø B	C	Stadi Stages
ASP. 500.1	1150	140	144	50	1



Articolo Art.	Potenza max W Max power W	A	Ø B	C	Stadi Stages
ASP. 306	800	175	106	48.5	2



Articolo Art.	Potenza max W Max power W	A	Ø B	C	Stadi Stages
ASP. 307	800	161	106	61	2